

### Valet Wide Area Vac



With a large 70 cm cleaning path and 40 litre capacity the Valet Wide Area Vac provides high productivity in large areas of carpet.

#### IDEAL FOR RETAIL PREMISES HOTELS EXHIBITION CENTRES AIRPORTS

- Large 70 cm cleaning path gives 2.5 times more coverage than a typical upright or tub vacuum
- 1800 rpm brush loosens deep down dirt and revives carpet pile
- Large 40 litre capacity for maximum productivity
- High efficiency twin 1000 W vacuum motors
- Easy to access and change filters and bags
- Straight line operation gives increased productivity
- Four-stage clean-air filtration removes dust particles down to 0.3 microns
- Ergonomically designed handle including height adjustment, cushioned grips and dead man's safety switch
- Brush height can be adjusted to five different positions, depending on the height of the carpet pile

Call for a free demonstration + 44 (0) 23 8070 6600

# Valet Wide Area Vac



<b>Model</b>	<b>Valet Wide Area Vac</b>
<b>Product Code</b>	<b>VWAV</b>

## TECHNICAL SPECIFICATION

Voltage AC (~) / Frequency	V/Hz	230/50
Construction class		I
Protection class	IP	20
Vacuum motor power	W	2 x 1000
Vacuum	mmwg/kPa	1600
Productivity rate	m <sup>2</sup> /h	743
Capacity	l	40
Hose length	m	2
Wand length	mm	576/956
Filtration		3 stage (including HEPA I3 filter)
Sound pressure level	dB(A)	65
Sound power level	dB(A)	72
Dimensions (L x W x H)	cm	34 x 33 x 37
Weight	kg	6
Cable length	m	12
Warranty		1 year subject to conditions

## ACCESSORIES

Dust bags (Pack of 10)	<input type="radio"/>
Cloth filter bag	<input checked="" type="radio"/>

Standard ● Optional ○



Dust bags



Cloth filter bag

CAUTION - READ THESE INSTRUCTIONS BEFORE USING THE MACHINE

# User instructions

---

## Valet Wide Area Vacuum

---

### Vacuum Cleaner



**Contents**

	Page
1. General Information .....	3
1.1. Important safety advice .....	3
1.2. Guidelines for the operator .....	3
1.3. Transporting the Machine .....	3
1.4. Electrical connection.....	3
2. Preparation for use.....	4
2.1. Bag Installation .....	4
2.2. Brush Height adjustment.....	4
3. Operation.....	5
3.1. Starting the machine.....	5
4. Maintenance .....	5
4.1. Filter replacement.....	5
4.2. Belt adjustment/replacement.....	5
5. Storage .....	6
6. After sales storage.....	6
7. Guarantee.....	6
8. Waste Electrical & Electronic Equipment.....	6
9. Technical specification .....	6
10. Accessories.....	7
11. Fault diagnosis .....	7
12. Declaration of conformity.....	8

# IMPORTANT

## BEFORE USE READ THESE INSTRUCTIONS AND RETAIN FOR FUTURE REFERENCE

---

### 1. General information

The Valet Wide Area Vacuum cleaner is designed for the collection of dust in indoor areas. It should not be used in outdoor areas.

The following instructions contain important information about the machine and safety advice for the operator.

Equipment must be operated, serviced and maintained in accordance with the manufacturer's instructions.

**If in doubt contact the supplier of your machine.**

These instructions are valid for the following model:

### Valet Wide Area Vacuum

#### 1.1 Important Safety Advice

When using electrical equipment basic safety precautions should be followed including the following.

- Read all instructions carefully before use.
- Before using the appliance, check that the mains power voltage corresponds with the voltage shown on the data plate.
- Do not leave machine unattended when plugged in.
- Keep children and unauthorised persons away from the machine when in use.
- Do not leave the machine connected to the electricity supply when not in use, always remove the plug from the socket-outlet.
- Do not operate switches or touch the mains plug with wet hands as this may cause electric shock.
- Switch off the machine before removing the plug.
- When unplugging pull the plug, not the supply cord.
- Do not operate the machine with a damaged supply cord or plug, or after the machine malfunctions or is damaged in any way. Contact an authorised Service Agent for repair or adjustment.
- The plug of the power supply must be removed from the socket-outlet before commencing cleaning of the machine or undertaking maintenance operations.
- The power supply cord must be regularly inspected for signs of damage. If the power supply cord is damaged, it has to be replaced.
- Do not use to pick up moisture or any liquids.
- Do not use where hazardous dust is present.
- Do not use in an explosive atmosphere.
- Do not use to vacuum up sharp objects.
- Do not pick up oil or other flammable material.
- Take care when using machine near the top of stairs to avoid overbalancing.

- Do not use the appliance to vacuum lighted cigarettes, hot ashes and other combustible objects,
- **Do not** use the appliance to vacuum tiny particles like cement or plaster dust as this will shorten life of the motors.
- **Do not** block air flow, blocking the suction in any way (blocked filters, blocked hose or full dust bag) will decrease the efficiency and will shorten the life of motor.
- **Do not** run the vacuum cleaner over the power cable.
- **Keep hair**, loose clothing, fingers and all parts of body away from openings and moving parts.

#### 1.2 Guidelines for the operator

- Only use the machine on firm level surfaces.
- Operators must be fully trained in the use of the machine in accordance with these instructions and be able to perform user maintenance.
- Operators should be physically capable to manoeuvre, transport and operate the machine.
- Operators should be able to recognise unusual operation of the machine and report any problems.
- Wear suitable footwear to avoid slipping.
- Wear suitable clothing to keep dry and warm.
- Where possible implement job rotation and adequate rest periods to avoid continuous use of the same muscles.
- **Do not** leave the machine running unattended
- **Do not** smoke when using the machine.
- **CAUTION** - This machine is for indoor use only and should not be used or stored outdoors or in wet conditions.

#### 1.3 Transporting the machine

When transporting a machine ensure that all components, accessories and removable parts are securely fastened and that the supply cord and plug are not trailing.

Take extreme care when moving a machine up or down steps.

#### 1.4 Electrical connection

Before connecting the machine to the power supply check that your supply voltage corresponds with that marked on the rating label on the rear of the machine.

The power supply cord plus any extension leads should not exceed 40m in total. The cross-section of any extension cable wiring must be at least 2,5mm<sup>2</sup>.

### UK only

The supply cord for 230V models is fitted with a plug containing a 13 amp fuse. Should the fuse require replacement it must be replaced by a 13 amp fuse conforming to BSI1362, and the fuse cover must be refitted. If the fuse cover is lost the plug must not be used until the correct replacement cover is fitted.

**IMPORTANT** – if the supply cord is damaged, it must only be replaced by a suitable cord available from the manufacturer or an authorised service agent.

**Warning** – This appliance must be earthed

## 2 Preparation for use

- Loosen handle pivot knobs and adjust handle to comfortable operation height

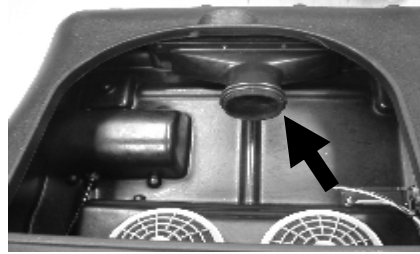


- Tighten knobs to lock handle in place



### 2.1 Bag Installation instructions

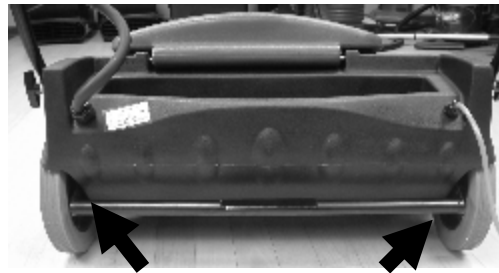
- Open Valet Wide Area Vacuum lid.
- Unzip cloth bag and install paper bag inside.
- Attach both bag openings together onto vacuum intake housing.



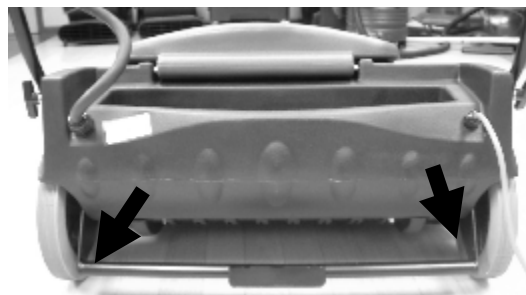
- Make sure bag is properly deployed inside machine housing.
- Completely close zip on cloth bag and close lid of machine.

### 2.2 Brush Height adjustment

- This machine has 5 brush pile adjustment settings.
- **To raise brush height:** Lift up height adjustment bar until desired brush height is attained.



- **To lower brush height:** push down on height adjustment bar until desired brush height is attained.



### 3 Operation of the machine

#### 3.1 Starting the machine

- Operate vacuum motor switch on handle.
- To operate brush squeeze trigger bar.
- Adjust height for proper pick-up (refer to height adjustment instructions and diagram below).



### 4 Maintenance

**WARNING - Before undertaking maintenance operations or adjustments switch off machine and unplug from the electricity supply.**

The machine requires minimum maintenance apart from the following checks by the operator.

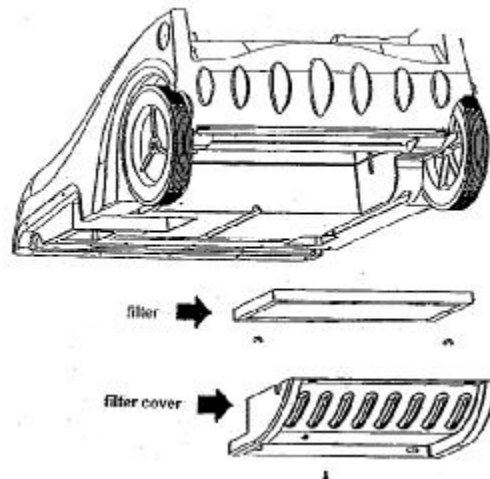
- **Supply cord** - Regularly inspect sheath, plug and cord anchorage for damage or loose connection.
- **Vacuum filters** – Check the vacuum filters are cleaned and replaced as appropriate.
- **Vacuum head** – Check and remove any debris or lint build-up from the head.

**IMPORTANT** – All other servicing and repairs should only be performed by a Truvox engineer or Authorised Service Agent.

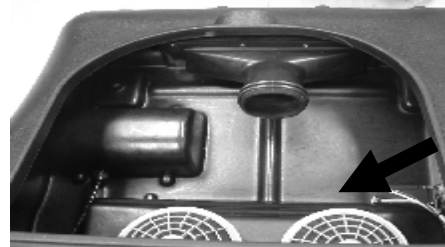
**IMPORTANT** – Should the machine fail to operate please refer to the fault diagnosis section in the back of the instruction manual. If the problem / remedy is not listed please contact Truvox Customer Service Department for rapid attention.

#### 4.1 Filter replacement

Remove filter cover screws at back of machine.



- Remove the two nuts holding filter onto machine.
- Replace filter in proper position and tighten nuts.
- Reinstall filter cover.

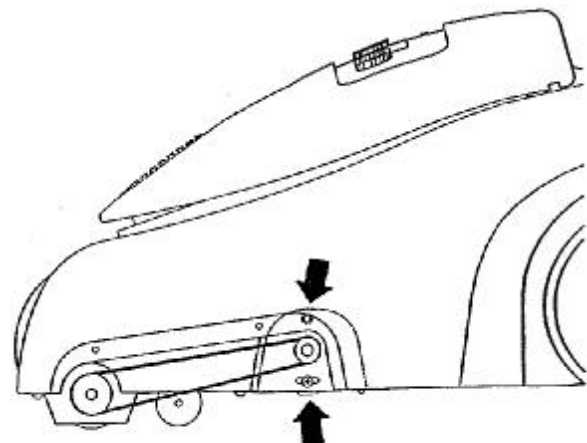


Vacuum filters.

- Lift filter housing from motor and replace filter.
- Reinstall filter housing.

#### 4.2 Belt Adjustment /replacement

- Remove belt cover on left side of machine



Belt Adjusting Screws

- Loosen the two motor belt adjusting screws on motor bracket.
- Remove belt
- Install new belt and reposition motor to eliminate excess slack.
- Once tension is set, tighten motor adjusting screws.

- Replace belt cover on side of machine.

## 5 Storage

- Always unplug the machine after use.
- Wrap supply cord around the handle of the machine ensuring that the plug is not trailing on the floor. Store the machine in a dry indoor area only.

## 6 After Sales Service

Should you require after sales service please contact the supplier from whom you purchased the machine, who will arrange service. Repairs and servicing of Truvox products should only be performed by trained staff. Improper repairs can cause considerable dangers to the user. Enquire about the Truvox low cost and efficient Maintenance Contract.

## 7 Guarantee

Your product is guaranteed for **one** year from the date of original purchase, or hire purchase, against defects in materials or workmanship during manufacture. Within the guarantee period we undertake at our discretion, to repair or replace free of charge to the purchaser, any part found to be defective, subject to the following conditions.

### CONDITIONS

1. Claims made under the terms of the guarantee must be supported by the original invoice/bill of sale issued at the time of sale, or the machine Serial Number.
2. For claims under this guarantee contact the supplier from whom you purchased the product who will arrange the appropriate

action. Do not initially return the product as this could result in transit damage.

3. Neither Truvox nor its distributors shall be liable for any incidental or consequential loss.
4. This guarantee is governed by the laws of England.
5. This guarantee does not cover any of the following:
  - Periodic maintenance, and repair or replacement of parts due to normal wear and tear.
  - Damage caused by accident, misuse or neglect, or the fitting of other than genuine Truvox parts.
  - Defects in other than genuine Truvox parts, or repairs, modifications or adjustments performed by other than a Truvox service engineer or authorised service agent.
  - Costs and risks of transport relating directly or indirectly to the guarantee of this product.
  - Consumable items and wear parts such as drive belts.

This guarantee does not affect your statutory rights, nor your rights against the supplier arising from their sales or purchase contract.

## 8 Waste Electrical & Electronic Equipment

Do not dispose of this device with unsorted waste. Improper disposal may be harmful to the environment and human health.

Please refer to your local waste authority for information on return and collection systems in your area.

## 9 Technical specification

All models: 230-240 V ~ 50 Hz, Class I construction. Fitted with 25m supply cord and 13A fused plug.

Model		Wide Area Vac
<b>Code</b>		VWAV
Voltage	v	230
Vac motor	W	2 x 1000
Vacuum lift	mm	1600
Sound pressure level	dB(A)	70
Size ( L x W x H)	cm	50 x 76 x 91
Cable length	m	25
Weight empty	kg	43
Brush width	cm	71
Brush Motor	rpm	1800
Brush height adjustment		5 pile settings
Drive belt		6 groove Poly-V
Filtration		4 stage Clean-Air
Warranty		1 year

Truvox International is a BSI Registered Company and our policy is one of continuous development. We reserve the right to change specifications without prior notification.



## 10 Accessories

Part	Part no	Description
Paper Dust bag	90701	Pack of 10 paper bags
Cloth dust bag	19816	Cloth bag
Filter	19855	Secondary filter
Filter	30088	Vacuum inlet filter

## 11 Fault Diagnosis

Problem	Reason	Remedy
The Vacuum does not work	<ul style="list-style-type: none"><li>• Power failure.</li></ul>	<ul style="list-style-type: none"><li>• Check the main fuse, the power supply cord and the plug.</li><li>• Check and reset 10 Amp cutout located on handle.</li></ul>
The brush does not rotate	<ul style="list-style-type: none"><li>• Power failure</li><li>• Damaged belt</li><li>• Obstructions present</li></ul>	<ul style="list-style-type: none"><li>• Check the main fuse, the power supply cord and the plug.</li><li>• Check and reset 3 Amp cutout located on handle.</li><li>• Removed side cover and check belt. Replace as necessary</li><li>• Remove obstruction</li></ul>

\* If the fuse blows several times, the machine should be checked by an authorised Service Agent.

## 12 EC Declaration of Conformity

We Truvox International Ltd.

Of Third Avenue  
Millbrook  
Southampton  
SO15 0LE  
England

declare that the machinery

Make Wide Area Vacuum  
Type Valet  
Model Valet Wide Area Vacuum

Serial Number:

Year of Construction: 2008

has been manufactured using the following transposed harmonized European Standards and technical specifications.

BS EN 61000-6-3, BS EN 61000-6-2, BS EN 60335-1 and BS EN 60335-2-69, and is in conformity with:

the Machinery Directive 98/37/EEC and subsequent amendments,

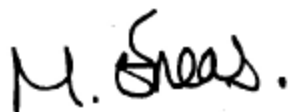
the Low Voltage Directive 73/23/EEC and subsequent amendments,

and the EMC Directive 89/336/EEC and subsequent amendments.

Signed in: SOUTHAMPTON, England

on the 1<sup>st</sup> day of March 2008

Signature



Name M. R. Eneas  
Position New Product Development Manager

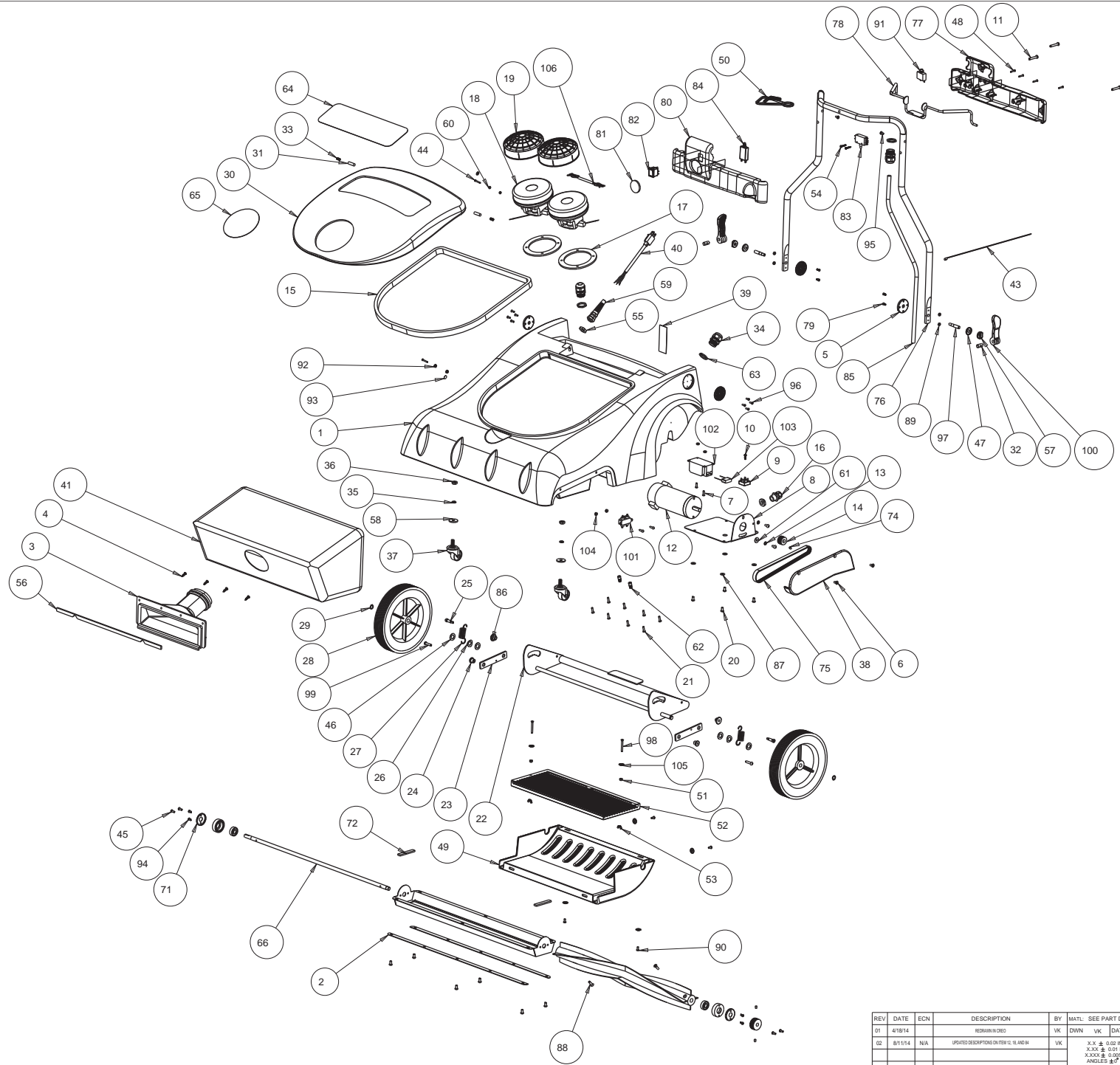
Truvox International Limited  
Third Avenue, Millbrook, Southampton, Hampshire SO15 0LE, England  
Tel: +44 (0) 23 8070 2200 Fax: +44 (0) 23 8070 5001  
e-mail: [truvox@truvox.com](mailto:truvox@truvox.com) Web: [www.truvox.com](http://www.truvox.com)



A Tacory Company

ITEM	DESCRIPTION	PART NO.	QTY
1	CHASSIS	33036	1
2	GASKET, BRUSH SHOE	30077	2
3	FILTER CHUTE	33193	1
4	SCREW, #10-16 X 3/4"L, PNHD, PH, BO, TAP-AB	33195	4
5	BRACKET, GROOVED	19798	4
6	SCREW, 1/4"-20 X 1/2"L, FHD, PH, ZP	15162	2
7	SCREW, #10-32 X 5/8"L, RHDHD, PH, ZP	12896	4
8	MOUNT, BRUSH MOTOR	19836	1
9	BRIDGE RECTIFIER, 25 A	33070	1
10	SCREW, #10-24 X 5/8"L, PNHD, PH, ZP, TAP-F	33451	1
11	SCREW, 1/4"-20 X 1-1/2"L, RHDHD, PH, ZP	1978	3
12	BRUSH MOTOR, 230V	33501	1
13	WASHER, 0.25", LOCK, INTERNAL TOOTH, ZP	7CY002	2
14	PULLEY, BRUSH, DRIVE	19835	1
15	GASKET, LID WAV	30079	1
16	STRAIN RELIEF, LIQ TITE	PD8	1
17	GASKET, 5.8" MOTOR	30090	2
18	MOTOR, VACUUM, 230V, 5.8"	31306	2
19	FILTER, VAC INTAKE, 5.8"	19834	2
20	SCREW, 1/4"-20 X 1/2"L, RNDHD, PH, ZP	86	10
21	SCREW, #10-16 X 3/4"L, PNHD, PH, ZP, TAPTITE	30620	8
22	BRACKET, AXLE ASS'Y, WAV	30491	1
23	ARM, WHEEL PIVOT	19841	2
24	PIVOT SLEEVE, WHEEL	30461	2
25	SCREW, 1/4"-20, SHCS, SHOULDER 5/16"D X 3/4"L	30617	2
26	SPRING, WAHSER, 1/2"	19818	2
27	SPRING, TENSION	30466	2
28	WHEEL, 10", PLASTIC HUB	19797	2
29	SNAP RING, 1/2", EXTERNAL	30507	2
30	LID	33500	1
31	PIN, LID HINGE	19864	2
32	CAM LEVER PIN	33105	2
33	SPRING, LATCH RELEASE	15357	2
34	STRAIN RELIEF, LIQ. TITE	33191	3
35	WASHER, 0.375", LOCK, SPLIT, ZP	3536	2
36	NUT, 3/8"-16, HEX, JAM, ZP	30358	2
37	WHEEL, CASTER	31209	2
38	BELT COVER	33057A	1
39	DECAL, CARPET LEVEL *	30618	1
40	POWER CORD UK, 14AWG, 3COND, 75'L, MALE PL	33505	1
40a	POWER CORD EURO, 14AWG, 3COND, 75'L, MALE PLUG	04-3989-0000	1
41	FILTER BAG, CLOTH	19816	1
42	FILTER BAG PAPER	90701	1
43	WIRE TIE, 15", BLACK	18706	1
44	SCREW, #10-32 X 3/4"	4735	2
45	SCREW TFT (A) R.H.	7535	4
46	WASHER, 0.563", PLAIN, SS	19616	4
47	CAM METAL WASHER	33106	2
48	SCREW, #6-32 X 3/4"L, PNHD, PH, ZP	16924	4
49	COVER, EXHAUST	19854G	1
50	CORD RETAINER BLACK	BA00163582	1
51	NUT-FINISHED HEX #10-32	1604	2
52	EXHAUST FILTER	19855	1
53	NUT-WING (10-32) ZINC PL	19975	2

54	SCREW, #6-13 X 1.25" PLASTITE	33117	2
55	NUT-CONDUIT	X8008N	2
56	GASKET, CHUTE	33502	1
57	CAM PLASTIC WASHER	33103	2
58	WASHER, 0.391", PLAIN, ZP	3321	2
59	STRAIN RELIEF 1/2" NPT	19461	1
60	NUT-HEX. LOCK (KEPS) #6-32	17376	2
61	WASHER, 0.265", PLAIN, ZP	14142	1
62	WIRE CONNECTOR	B123-2700	2
63	NUT, LOCK, STRAIN RELIEF, NI-PLATE	33192	3
64	DECAL, RECTANGLE	X9497	1
65	DECAL LARGE ROUND	X9498	1
66	AXLE, BRUSH	19808	1
71	THREAD GUARD	19848	2
72	GASKET	32896	2
74	SCREW, 1/4"-20 X 5/16"L, SET, ALLEN, CUPPNT	02011	3
75	BELT, BRUSH DRIVE	19802	1
76	HANDLE, MAIN	19829	1
77	SWITCH BOX, BOTTOM	33190	1
78	TRIGGER, BRUSH SWITCH	19849	1
79	SCREW, #8-32 X 1/2"L, FHD, PH, ZP, TAP-F	X9582	4
80	SWITCH BOX, TOP	33189	1
81	DECAL, SMALL CIRCLE	X9499	1
82	SWITCH, ROCKER, DPST, 20A	32966	1
83	SWITCH, PUSH BUTTON, DPST, 20A	19357	1
84	CIRCUIT BREAKER, PUSH BUTTON, 1.6A	31368	1
85	CONTROL CABLE	33452	1
86	PIVOT SLEEVE, WHEEL	30464	2
87	WASHER-PLAIN 1/4"	851	4
88	SCREW, 1/4"-20 X 7/8"L, FHD, PH, ZP	11276A	1
89	NUT, HEX #8-32 ZP	30074	4
90	SCREW, #10-24 X 7/16"L, PNHD, PH, ZP	3660	4
91	10 AMP CIRCUIT BREAKER	32964	1
92	NUT-HEX LOCK #10-24	10892	2
93	GROUND LABEL	X9214	2
94	SCREW, #8-18 X 3/8"L, PNHD, PH, ZP, TAP-AB	16142B	4
95	SCREW, TCT(F) PAN HEAD, #10-32	3261	2
96	SCREW, #8-32 X 1/2"L, FHD, SOCKET, BO	33114	8
97	METAL STUD, CAM LEVER	33104	2
98	SCREW, #10-32 X 1-3/4"L, FHD, PH, ZP	33630	2
99	SCREW, 1/4"-20 X 1-1/4"L, RHDHD, PH, ZP	19999	2
100	CAM LEVER HANDLE	33102	2
101	EMI FILTER, MOTOR	33508	1
102	EMI FILTER, POWER	33506	1
103	CAPACITOR, EMI FILTER	33628	1
104	NUT-HEX. LOCK (KEPS) #10-32	2625	4
105	WASHER, SEALING #10	11385	6
106	WIRING HARNESS	33504	1



REV	DATE	ECN	DESCRIPTION	BY	MATL	SEE PART DRAWINGS	FINISH	SEE PART DRAWINGS	TRUVOX
01	4/18/14		REDESIGNED	VK	DWN	VK	DATE	4/15/14	3101 Wichita Court Frisco, TX 75041-1755
02	8/11/14	NA	UPDATED DESCRIPTIONS DIVERGENT ISLANDS	VK			SCALE	1:1	SHEET
									1 of 1
									DESCRIPTION
									WIDE AREA VACUUM
									REV MODEL
									00
									REV DRAWING
									02
									PN:
									93031TV

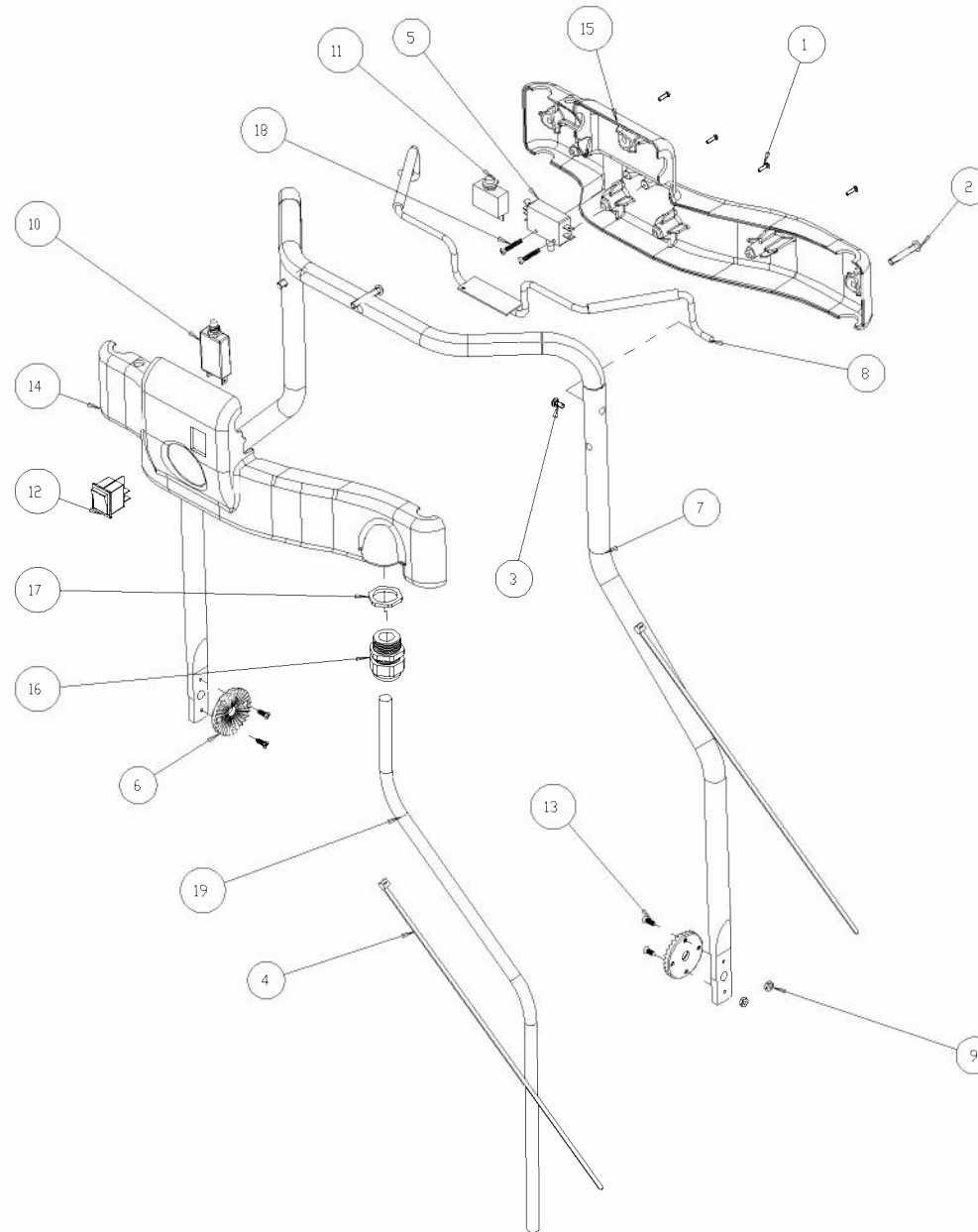
TOLERANCES UNLESS OTHERWISE SPECIFIED:  
 FRACTIONS: DECIMAL EQUIVALENTS  
 DIMENSIONS: UNLESS OTHERWISE SPECIFIED  
 ANGLES: UNLESS OTHERWISE SPECIFIED  
 BREAK SHARP EDGES TO 0.010  
 FINISH: SEE PART DRAWINGS  
 SCALE: 1:1 SHEET 1 of 1  
 DESCRIPTION: WIDE AREA VACUUM  
 REV MODEL: 00 REV DRAWING: 02  
 PN: 93031TV

PART NUMBER

19984

## BILL OF MATERIALS

ITEM	QTY	PART NUMBER	DESCRIPTION
1	4	16924	SCREW, #6-32 X 3/4"L, PAN HEAD
2	3	01978	SCREW, 1/4"-20 X 1-1/2"L, RHDHD, PH, ZP
3	1	03261	SCREW, TCT(F) PAN HEAD, #10-32
4	4	18706	WIRE TIE, 15", BLACK
5	1	19357	SWITCH, PUSH BUTTON, DPST, 20A
6	2	19798	BRACKET, GROOVED
7	1	19829	HANDLE, MAIN
8	1	19849	TRIGGER, BRUSH SWITCH
9	4	30074	NUT, HEX #8-32 ZP
10	1	31368	CIRCUIT BREAKER, PUSH BUTTON, 16A
11	1	32964	10 AMP CIRCUIT BREAKER
12	1	32966	SWITCH, ROCKER, DPST, 20A
13	4	33188	SCREW, #8-32 X 1/2"L, FHD, PH, ZP, TAP-F
14	1	33189	SWITCH BOX, TOP
15	1	33190	SWITCH BOX, BOTTOM
16	1	33191	STRAIN RELIEF, LID, TITE
17	1	33192	NUT, LOCK, STRAIN RELIEF, NI-PLATE
18	2	33194	SCREW, #6-13 X 1L, PNHD, PH, ZP, PLASTITE
19	1	33452	CONTROL CABLE

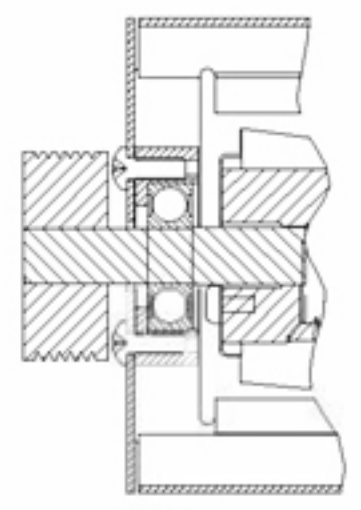
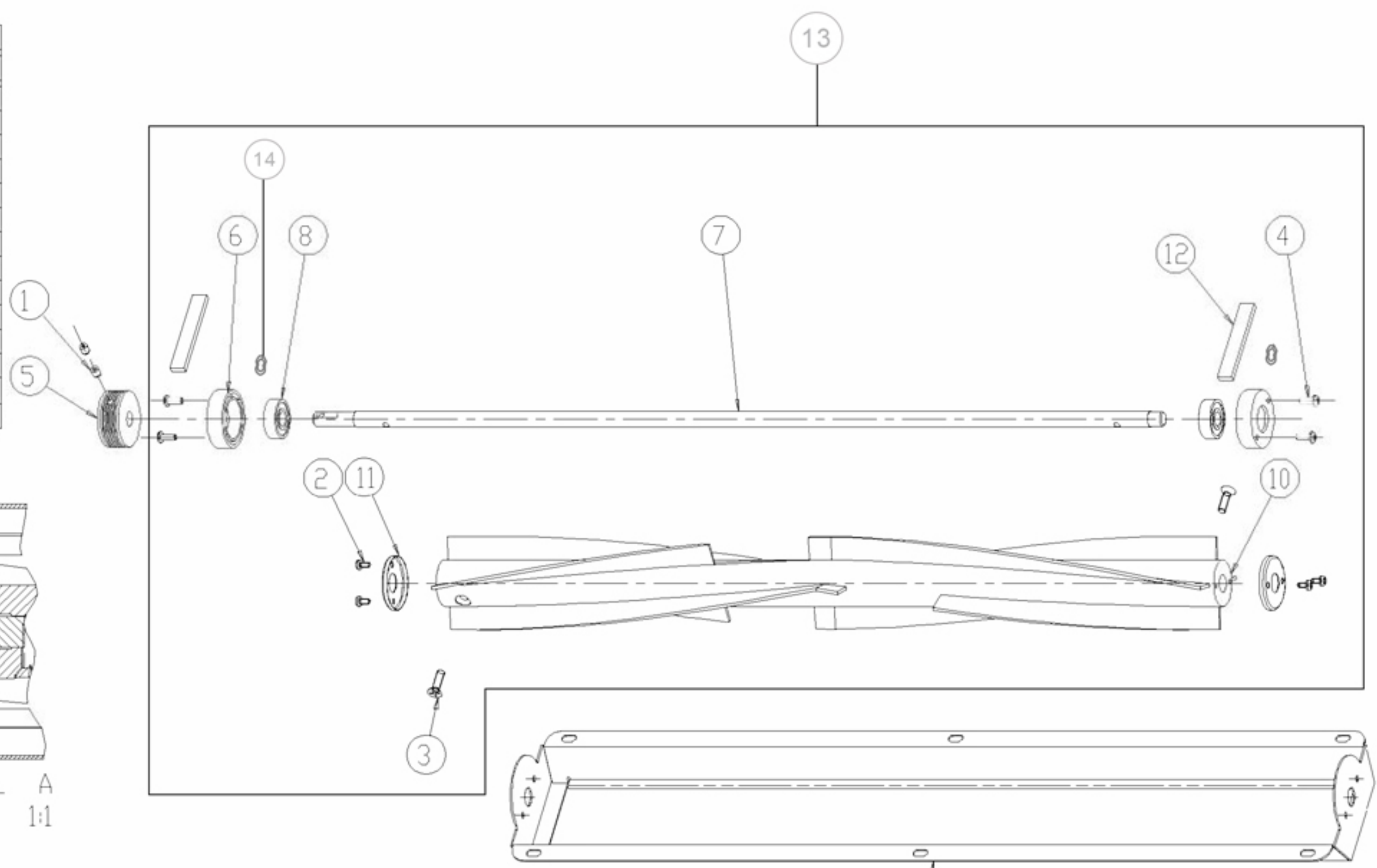


REV	DATE	ECN	DESCRIPTION	BY	MATERIAL	FINISH	Tacony COMMERCIAL FLOOR CARE		3101 Wichita Court Fort Worth, TX 76140-1755	
A	4/08	10787	NEW RELEASE	KM	DWN KM	SCALE	SHEET	1 OF 1		
B	4/24/09	-	NEW RELEASE	AR	UNLESS OTHERWISE NOTED ALL TOLERANCES ARE ±0.02		TACONY CORPORATION CLAIMS PROPRIETARY RIGHTS IN THE MATERIAL DISCLOSED HEREIN. THIS DRAWING IS ISSUED FOR ENGINEERING INFORMATION ONLY. IT MAY NOT BE REPRODUCED, NOR MAY THE INFORMATION HEREIN BE USED FOR MANUFACTURING PURPOSES WITHOUT WRITTEN PERMISSION FROM TACONY CORP.		DESCRIPTION HANDLE, WAV, 230V	
C	1/15/14		CHANGED CIRCUIT BREAKER	VK			A	PART NUMBER	19984	REV C

PART NUMBER **19870**

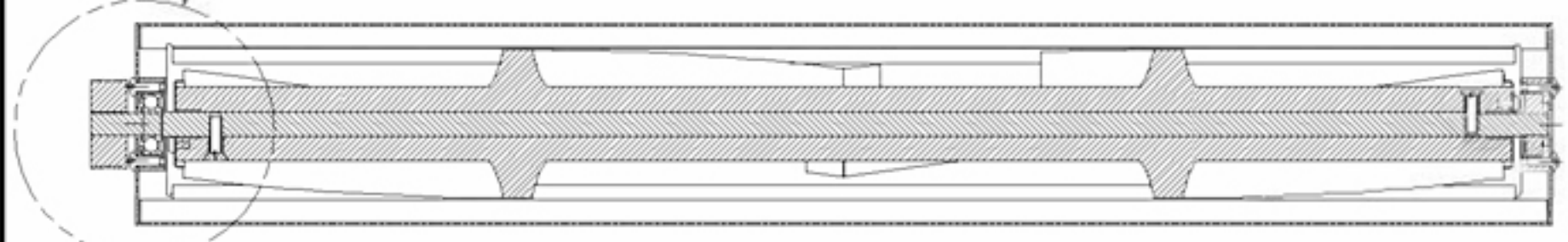
BILL OF MATERIALS

ITEM	QTY	PART NO.	DESCRIPTION
1	2	02011	SCREW, 1/4"-20 X 5/16"L, SET, ALLEN, CUPPNT, 80
2	4	07535	SCREW, #8-18 X 3/8"L, FNHD, PH, ZP, TAP-AB
3	2	11276	SCREW, 1/4"-20 X 7/8"L, FHD, PH, ZP
4	4	16142	SCREW, #10-32 X 1/2"L, FNHD, PH, ZP
5	1	19604	PULLEY, BRUSH, DRIVEN
6	2	19605	BEARING BLOCK
7	1	19608	AXLE, BRUSH
8	2	19609	BEARING, SEALED, 6201-2RS
9	1	19810	SHOE, BRUSH MOUNT
10	1	19811	BRUSH, 28"
11	2	19848	THREAD GUARD
12	2	32896	GASKET
13	1	X1298	BRUSH ROLL ASSEMBLY
14	2	07858	SPRING FINGER (2 PER)



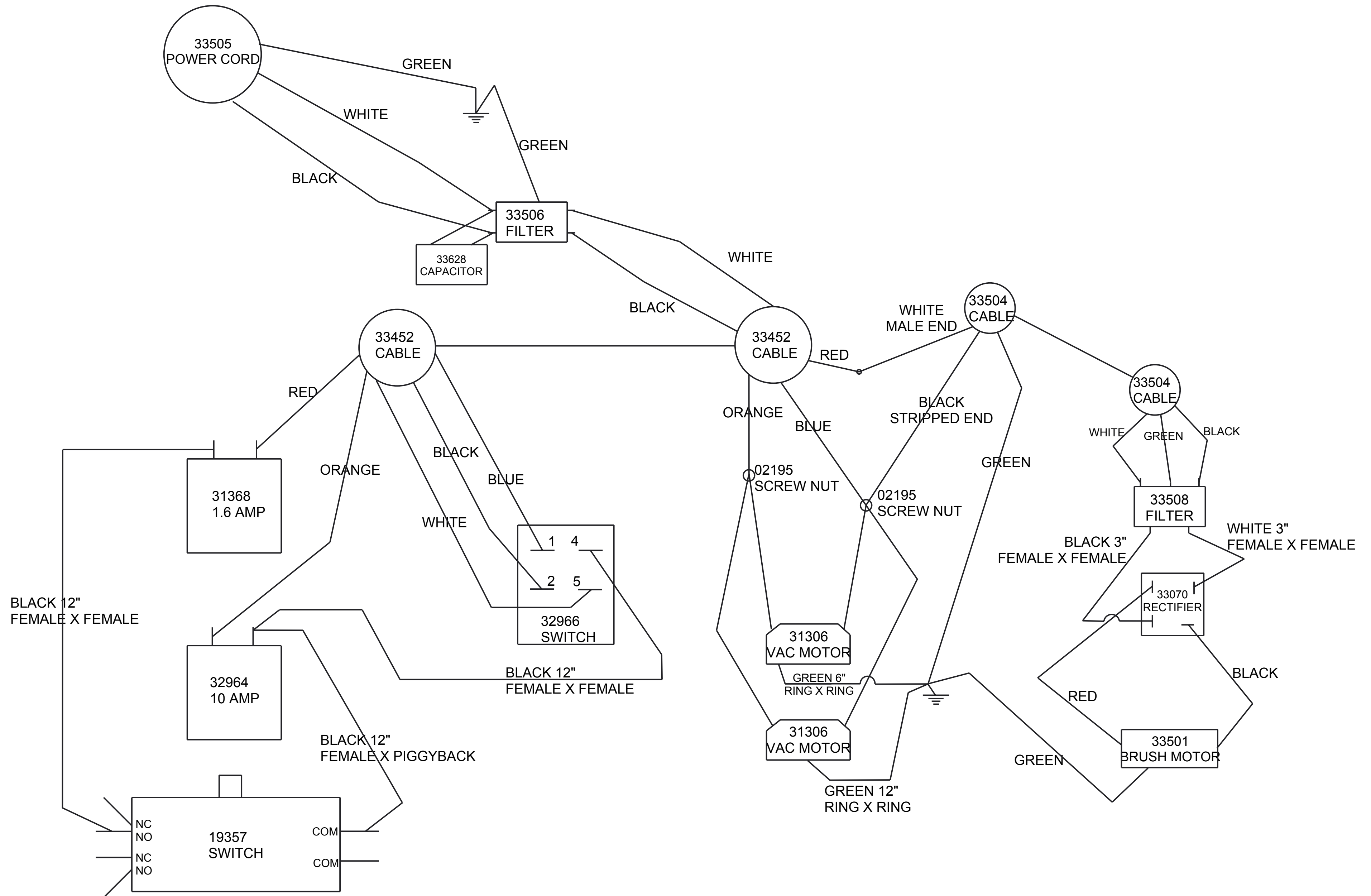
DETAIL A  
SCALE 1:1

SEE DETAIL A



SECTION A-A

REV	DATE	ECN	DESCRIPTION	BY	MATERIAL	FINISH	Taconomy		3101 Wichita Court Fort Worth, TX 76140-1755	
E	06/07	10741	REMOVED 19838	TNC	DWN OM	DATE 05/98	SCALE NTS	SHEET 1 OF 1		
D	02/00	10297	REMOVED 19837 & 19806 ADDED 07535 & 19848	XAZ	UNLESS OTHERWISE NOTED ALL TOLERANCES ARE ±0.02		TACOY CORPORATION CLAIMS PROPRIETARY RIGHTS IN THE MATERIAL DISCLOSED HEREIN. THIS DRAWING IS ISSUED FOR ENGINEERING INFORMATION ONLY. IT MAY NOT BE REPRODUCED, NOR MAY THE INFORMATION HEREIN BE USED FOR MANUFACTURING PURPOSES WITHOUT WRITTEN PERMISSION FROM TACOY CORP.		DESCRIPTION	ASSY, BRUSH, WAV
C	12/99	10104	REMOVED 19848	TH			A	PART NUMBER	19870	REV E



★ STAR DENOTES CRITICAL DIMENSION

REV	DATE	ECN	DESCRIPTION	BY	CBY	MATL	SEE PARTS	FINISH	SEE PARTS	TRUVOX	
01	8/19/14	N/A	UPDATED BREAKER FROM 32935 TO 31368	VK	KK	DWN KM	DATE 02/08	SCALE -	SHEET 1 of 1	COMMERCIAL FLOOR CARE EQUIPMENT	
02	8/20/14	N/A	UPDATED RECTIFIER WIRING	VK	KK					3101 Wichita Court Fort Worth, TX 76140-1755	
03	8/20/14	N/A	RECTIFIER WAS 33061 NOW 33070	KK	KK					DESCRIPTION: WAV 230V	
										PN: 93031TV	

TACONY CORPORATION CLAIMS PROPRIETARY RIGHTS IN THE MATERIAL DISCLOSED HEREIN. THIS DRAWING IS ISSUED FOR ENGINEERING INFORMATION ONLY. IT MAY NOT BE REPRODUCED, NOR MAY THE INFORMATION HEREIN BE USED FOR MANUFACTURING PURPOSES WITHOUT WRITTEN PERMISSION FROM TACONY CORP.



## FAULT FINDING GUIDE

### HYDROMIST 35

Model: .....

Serial no: .....

**NOTE:** Please refer to the machine pictorial in the manual

#### **MACHINE DOES NOT WORK**

Has the machine worked before?	
Have you tried the plug in another plug socket?	
Have you checked your power cable and fuse for damage?	
Press the reset button	

#### **MACHINE IS NOT PICKING UP WATER**

Does the vacuum motor run when switched on?	
Check the vacuum pick up shoe and hose for blockages	
Check the dirty water tank lid and gasket are ok and fitted correctly	
Check the plug in the drain hose is in correctly	
Check the dirty water filter and ball are clean	

#### **MACHINE IS NOT PUTTING SOLUTION ON FLOOR**

Check you have water in your clean water tank	
Check that the filter is clean in the clean water tank	
Check your nozzle for blockages or damage and clean if necessary (Fizzy drink or Vinegar is recommended)	
Check that you can hear the pump and solenoid are coming on when you press the switch	

#### **NO SOLUTION IS SPRAYED ONTO THE FLOOR WHEN USING TOOLS WITH THE MACHINE**

Have you got water in your clean water tank?	
Check that you can hear the pump is coming on when you press the switch	
Check that the solution hose is correctly fitted at both ends	
Check that the filter is clean in the clean water tank	
Check your nozzle for blockages or damage and clean if necessary (Fizzy drink or Vinegar is recommended)	

### **MACHINE IS LEAVING STREAKS ON THE CARPET**

Ensure you are not putting too much water on the carpet	
Check you are not using too much chemical (always read the instructions on the bottle)	
Check the vacuum pick up shoe and hose for blockages	
Check the brush and brush area for obstructions	
Ensure you are not moving too fast over the area which is not giving the machine enough time to pick up the water and chemical	

### **BRUSH ASSEMBLY NOT TURNING**

Check that you can hear the motor come on	
Press the reset button which can be found just above the mains power cable entry <ul style="list-style-type: none"><li>- Situated below the main switch panel where the four main switches are</li></ul>	
Turn the machine off and unplug it <ul style="list-style-type: none"><li>- Check that you can turn the brush by hand</li><li>- If the brush spins very easily on it's own the belt has come off or snapped</li><li>- If the brush does not spin this means the bearings have seized and will need replacing or the complete brush assembly will need to be changed</li></ul>	

### **ADDITIONAL COMMENTS:**

For any other issues or assistance in carrying out these checks please contact the Truvox Service Desk

Truvox International Limited, Unit C (East), Hamilton Business Park, Manaton Way, Botley Road, Hedge End, Southampton SO30 2JR, UK

Tel: + 44 (0) 23 8070 6601 | Email: [service@truvox.com](mailto:service@truvox.com) | Web: [www.truvox.com](http://www.truvox.com)